



OAKLANDS FARM SOLAR PARK

Applicant: Oaklands Farm Solar Ltd

Environmental Statement

Chapter 1 - Figures 1.1 – 1.5

January 2024

Document Ref: EN010122/APP/6.1/Fig 1.1 – 1.5

Revision: -

Planning Act 2008

Infrastructure Planning (Application: Prescribed Forms and Procedure) Regulations 2009 - 5(2)(a)



**Oaklands Farm Solar
Park - Environmental
Statement Volume 2**
Chapter 1: Introduction
Figures

Final report
Prepared by LUC
January 2024

Figure 1.1: Site Location

Figure 1.2: Aerial Photo of the Order Limits

Figure 1.3: Areas of the Site


Figure 1.4a: Field Numbers North

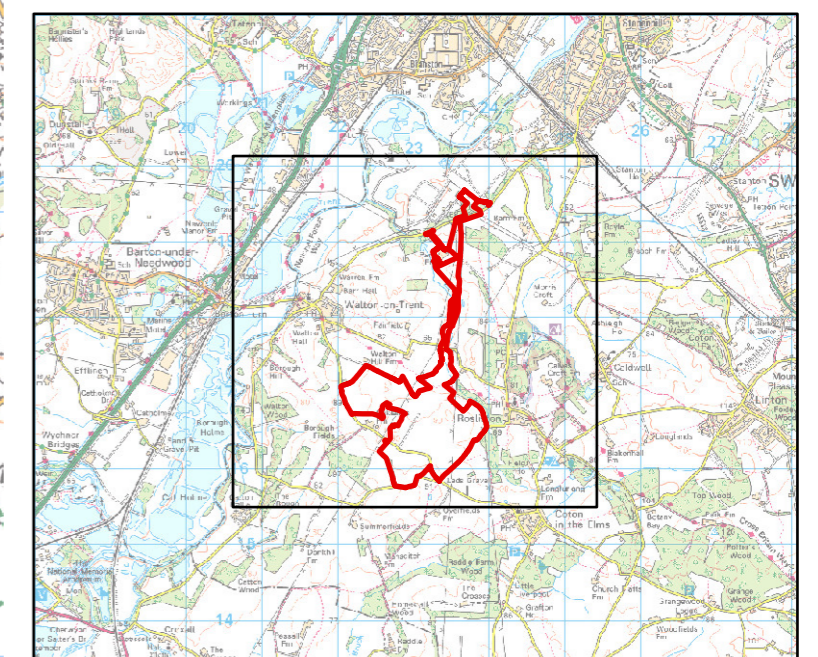
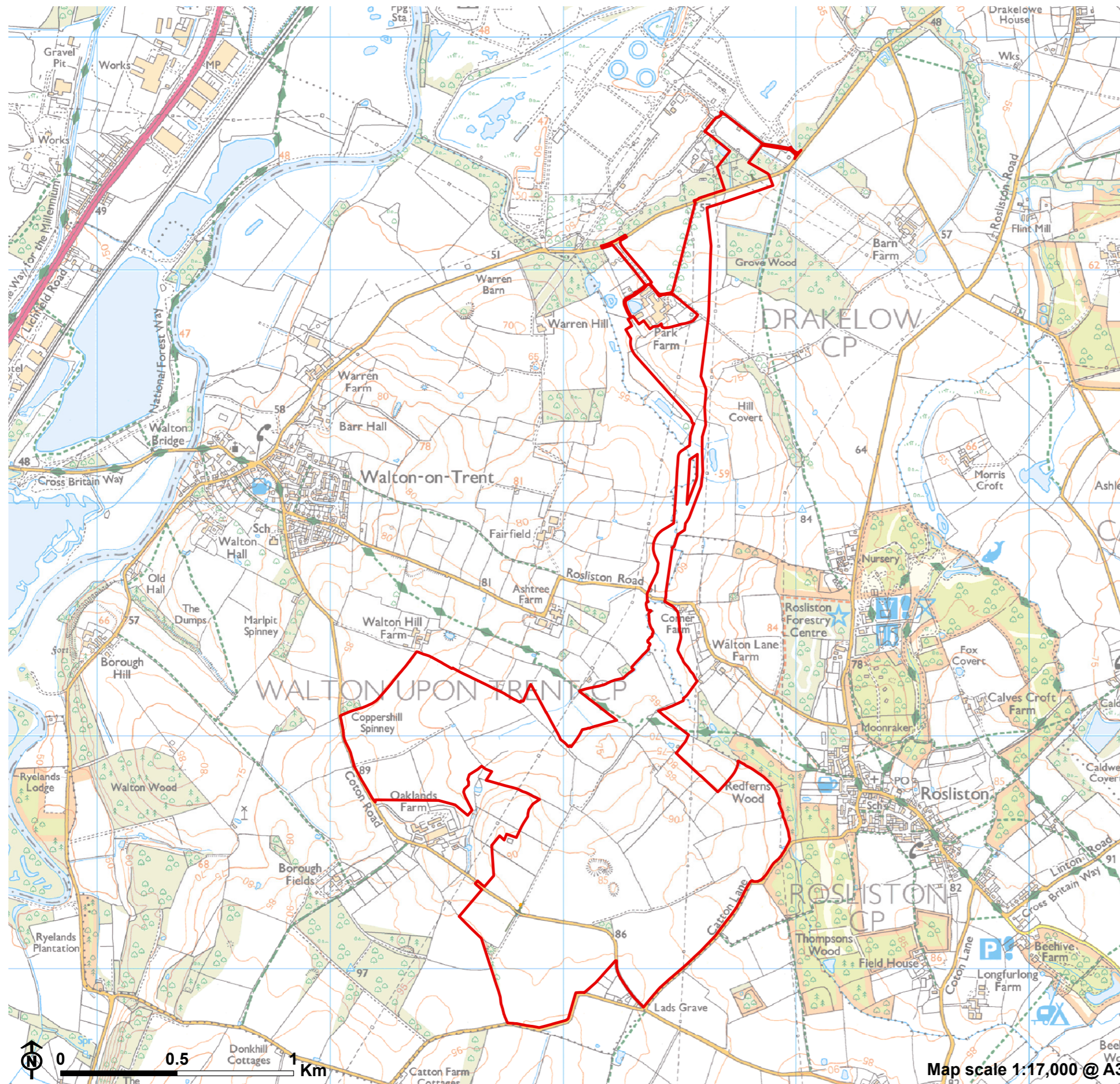
Figure 1.4b: Field Numbers South

Figure 1.5: Site Constraints



Figure 1.1: Site Location Plan


 Order Limits / Site Boundary



PINS reference: EN010122



Figure 1.2: Aerial Photo of the Order Limits

 Order Limits / Site Boundary



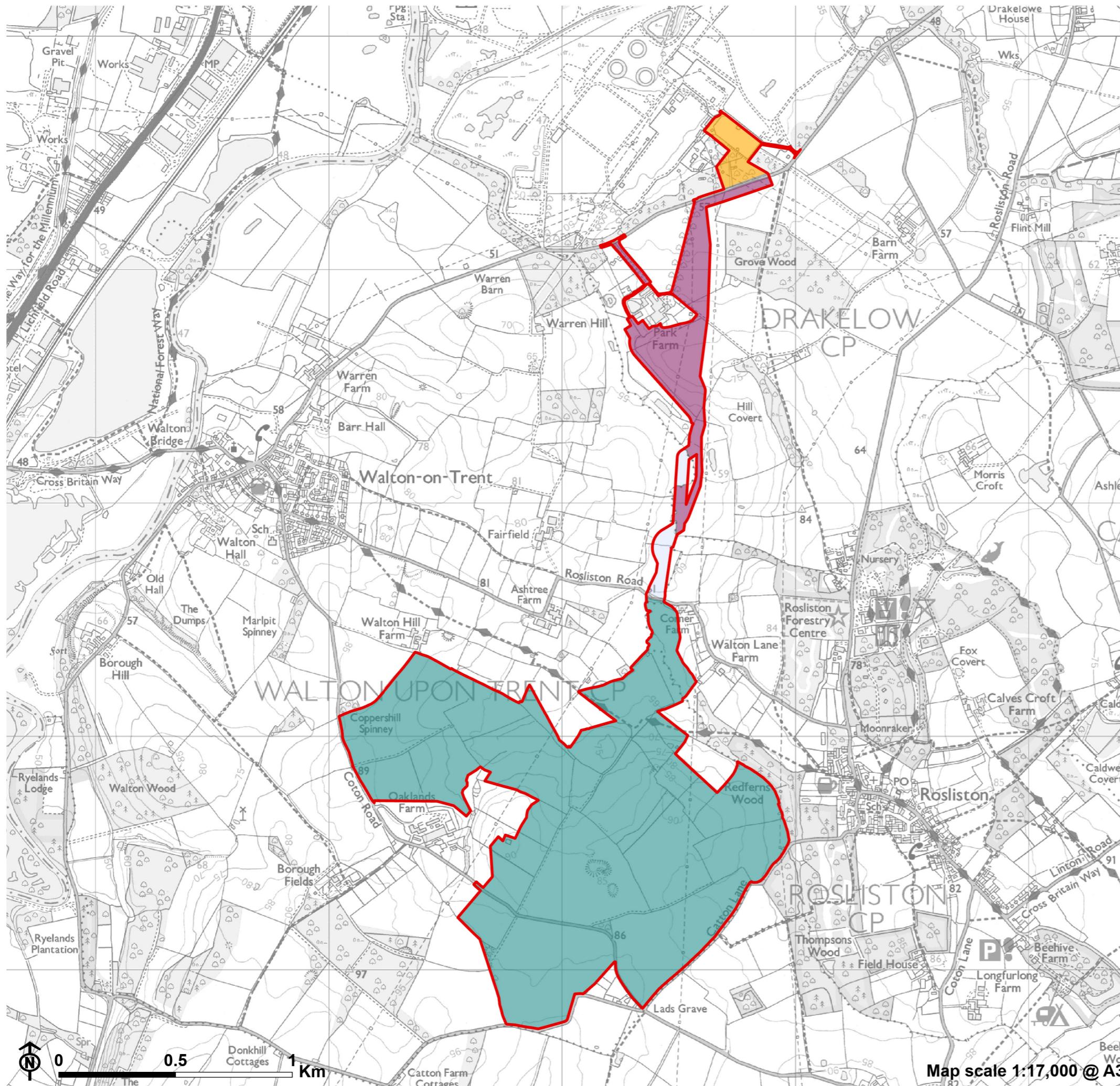
PINS reference: EN010122








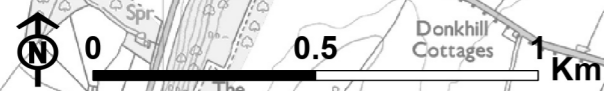
Oaklands Farm Solar Park
for Oaklands Farm Solar Ltd



Figure 1.3: Areas of the Site



-  Order Limits / Site Boundary
-  Drakelow Power Station area
-  Fairfields Farm area
-  Oaklands Farm area
-  Park Farm area





Map scale 1:17,000 @ A3

PINS reference: EN010122





Figure 1.4a: Field Numbers

-  Order Limits / Site Boundary
-  Field number
- F: Fairfields Farm
- O: Oaklands Farm
- P: Park Farm





PINS reference: EN010122





Figure 1.4b: Field Numbers

-  Order Limits / Site Boundary
-  Field number
- F: Fairfields Farm
- O: Oaklands Farm
- P: Park Farm

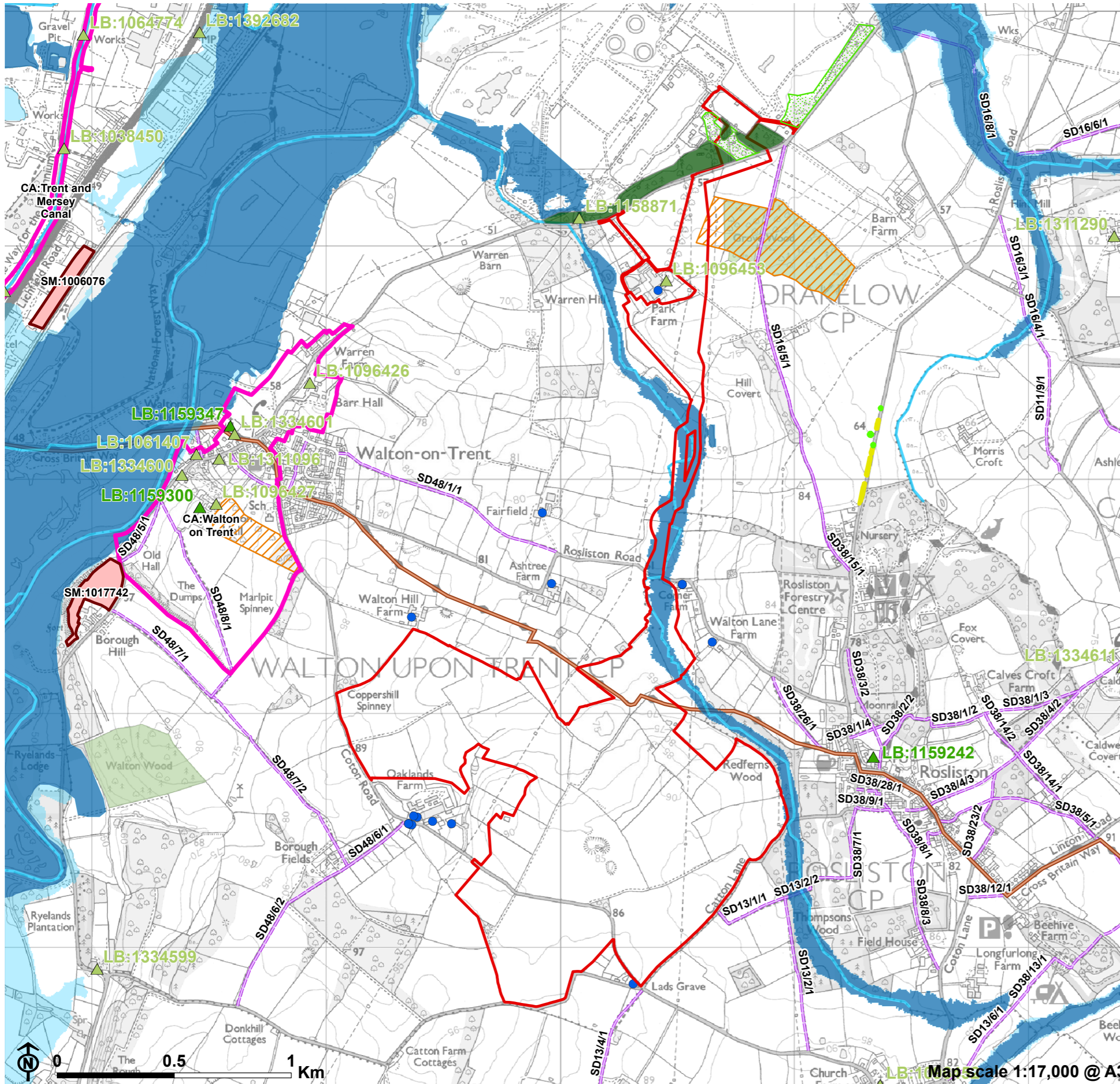


PINS reference: EN010122





Figure 1.5: Site Constraints



- Order Limits / Site Boundary
- Residential property within close proximity
- Designated heritage asset**
- Listed Building (LB)**
 - ▲ Grade II*
 - ▲ Grade II
- Scheduled Monument (SM)
- Conservation Area (CA)
- Public Rights of Way**
 - Public rights of way
 - Cross Britain Way / National Forest Way long distance footpath
- Hydrology**
 - Watercourse
 - Flood zone 2
 - Flood zone 3
- Ecology**
 - Local wildlife site
 - Ancient woodland
- Tree preservation order (TPO)**
 - TPO woodland
 - TPO point
 - TPO tree group
 - TPO area

Notes:
For ecological survey results please see figures within Appendices 6.3-6.15.

All utility and telecommunications infrastructure is shown on Figure 16.1.

PINS reference: EN010122

